

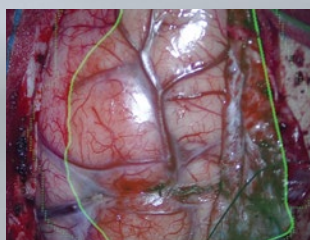
From Eye to Insight

Leica
MICROSYSTEMS



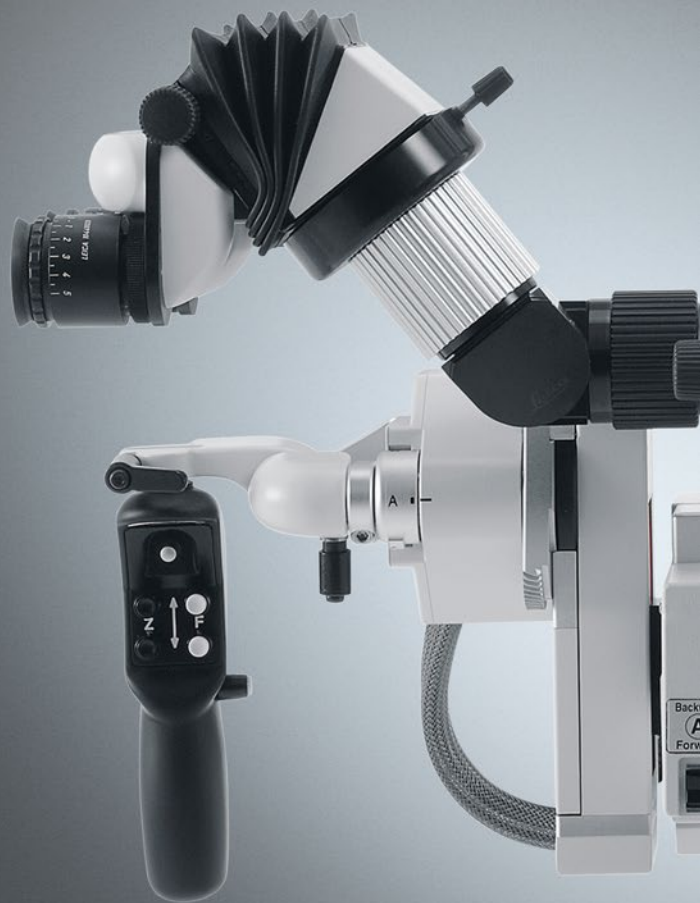
FULL HD IMAGES, FULL CONFIDENCE

With CaptiView HD Image injection
for M530 microscopes



FULL HD IMAGES, FULL CONFIDENCE

See full-HD visual data with 500:1 contrast injected directly into the field of view, for confident surgical decisions without interruption.



To achieve the best possible patient outcome you need a complete picture of the surgical site, which can require multiple pieces of image data, from Image Guided Surgery (IGS) to fluorescence and endoscope images. With the CaptiView image injection module, all the visual data you need is overlaid in full High Definition (HD) directly in the eyepieces of your M530 microscope from Leica. With no need to look at a screen, you remain fully focused on your patient.



Every detail you need before your eyes

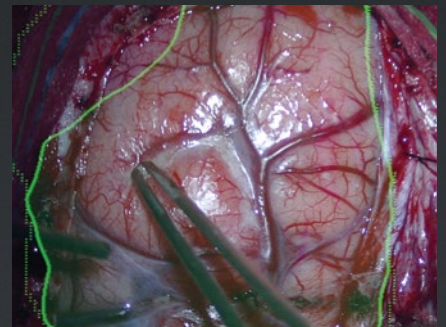
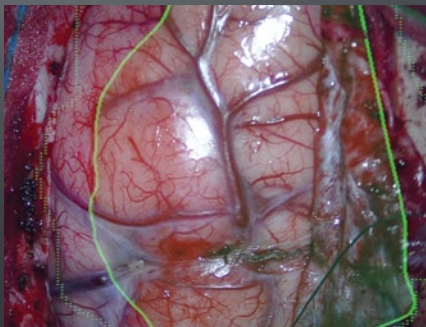
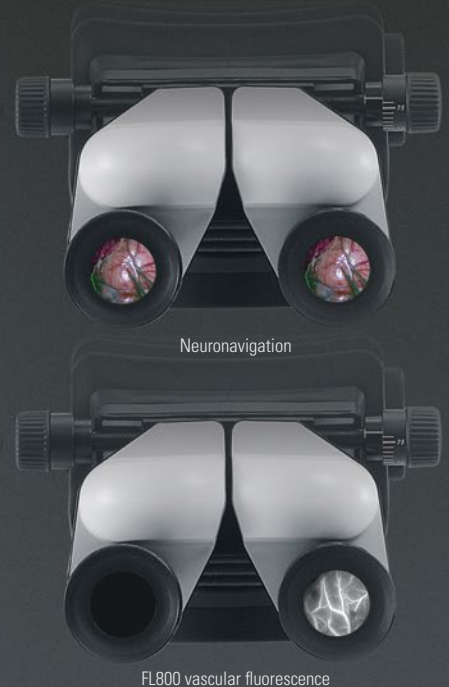
With 1920 x 1080 pixel full-HD LCD display and LED backlight, you benefit from bright images with 500:1 contrast and 2.6x higher resolution than our previous image injection devices. As you have crisp, HD images overlaid directly onto the surgical view, there's no need to break concentration to look at a screen.

Integration avoids interruption

Full compatibility with IGS systems and integration with your M530 microscope from Leica supports an interruption-free workflow. No need to switch between eyepieces and screen and only one touch of the microscope handgrip or wireless footswitch required to activate correlated (overlaid) or non-correlated images.

Share your view, share your skill

Shared view for main surgeon and assistant enhances the assistant's ability to follow each delicate movement during surgery. Full HD display and recording complete with injected images enable later review and teaching outside of the OR.



All images show data captured with CaptiView and Neuronavigation Software Cranial 3.1 from Brainlab

GPS for the brain

IGS systems have become a standard in neurosurgical procedures such as tumor resection. CaptiView image injection takes the position tracking capabilities and pre-operative data of IGS systems and injects it into the microscope eyepieces. Now you can clearly see your position in relation to pre-operative data and complex brain structures, without ever needing to take your eyes from the road ahead. CaptiView image injection is compatible with a number of market-leading IGS systems - contact your Leica representative for details in your region.

Key features

- > Full-HD 1080p resolution and 500:1 contrast
- > Overlay data onto the live surgical image or view as non-correlated
- > Image data can be injected from IGS, endoscope, fluorescence modules and monitor
- > Choose to view in left, right or both* eyepieces

*Right eyepiece only for FL800 fluorescence

TECHNICAL SPECIFICATIONS

COMPATIBILITY

Microscopes	M530 OH6 M530 OHX*
Image data sources	Image data can be injected from IGS**, endoscope, fluorescence module FL800 ULT, and monitor

OPTICAL DATA

Type	3 transmissive HTPS Panels
Resolution	1920 × 1080 Pixel, full-HD
Contrast	500:1
Color depth	24 bit
Display	Overlay image onto the live surgical image or view them non-correlated

GRAPHICS INTERFACE

RGB signals	0.7V p-p / 75 Ohm
Valid resolutions	800(H) × 600(V) pixels at 60/72/75 Hz 1280(H) × 720(V) pixels at 60 Hz 1600(H) × 900(V) pixels at 60 Hz 1920(H) × 1080(V) pixels at 60 Hz
H sync and V sync	TTL

REGULATIONS AND STANDARDS

- > Council Directive 93/42/EEC on Medical Devices (MDD) and its amendments.
- > IEC 60601-1 / EN 60601-1 Medical Electrical Equipment, Part 1: General requirements – including national differences of EU, CA, US.
- > IEC 60601-1-2 / EN 60601-1-2 Electromagnetic Compatibility.

The Medical Division, within Leica Microsystems (Schweiz) AG, holds the management system certificates for the international standards ISO 13485, and ISO 14001 relating to quality management, quality assurance and environmental management

AMBIENT CONDITIONS

Mode	+10 °C to +40 °C +50 °F to +104 °F to 75 % relative humidity
Storage	-10 °C to +55 °C -14 °F to +131 °F to 75 % relative humidity
Transport	-40 °C to +70 °C -40 °F to +158 °F

TECHNICAL DATA

Input voltage	+24 V DC (via CAN connection)
Power consumption	max. 10 W
Safety type	Type B

* Not available in all regions. Contact your local Leica representative for information.
**Contact your local Leica representative for compatibility in your region.



CONNECT
WITH US!



Leica Microsystems (Schweiz) AG · Max Schmidheiny Strasse 201 · CH-9435 Heerbrugg
T +41 71 726 3333 · F +41 71 726 3399

www.leica-microsystems.com