

# ARJOHUNTLEIGH

GETINGE GROUP

## CARENDO

ELECTRIC HYGIENE CHAIR

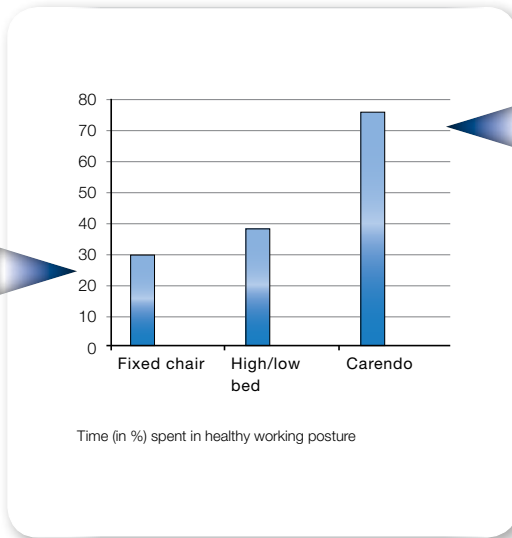


...with people in mind

# WORKING METHODS CAN PUT CARERS' HEALTH AT RISK



Studies have confirmed that carers assisting with washing in bed or showering using a fixed-height chair are subjected to high static load levels. In fact, when assisting with these sessions only 30-40%<sup>1</sup> of the time is spent working in a sound body position, with a resulting high risk of back injury and pain.



A height-adjustable hygiene chair is the best solution for minimising static load to protect carers' health and safety. Investigations have shown that carers spend 75%<sup>1</sup> of their time in sound working positions when using a height-adjustable hygiene chair. For experienced users this figure can be even higher<sup>2</sup>.



## Maintain resident dignity

Care Raiser makes *Carendo* the most dignified solution for the most sensitive tasks in elderly care, minimising intrusive handling in routines such as dressing and undressing and changing incontinence pads. As Care Raiser enables the resident to be dressed and undressed on *Carendo* in the shower area, the resident avoids the indignity of being transported to and from the shower semi-clothed.

With *Carendo*, all hygiene tasks can be managed by a single carer, allowing personal, dignified one-to-one care. Being as independent as possible is vital for personal dignity. *Carendo* promotes participation by the resident. When showering, the resident can be comfortably positioned to use the shower handle, participating to actively stimulate mobility.

1). Knibbe NE, Knibbe JJ, Postural load of nurses during bathing and showering of patients: Results of a laboratory study, Professional Study, 1996 Nov: 37-39.  
 2). Brinkhoff A, Knibbe NE, The Ergostat program, pilot study of an ergonomic intervention to reduce static loads for caregivers, Professional Safety, 2003.

# CARE RAISER: ENHANCING SENSITIVE HYGIENE ROUTINES

*Carendo*™ is an electrical hygiene chair with a unique capability to offer optimum solutions for all stages of assisted hygiene processes. This means reduced strain for carers from tasks traditionally performed on the bed such as dressing/undressing the resident or changing incontinence pads.

What makes this possible?

Care Raiser – an innovation for managing sensitive hygiene tasks.



Height adjustability and the Care Raiser function ensure the carer can always work close to the resident in a comfortable posture.



For the carer, Care Raiser reduces the high risk of strain associated with tasks such as undressing and dressing the resident on the bed.



For residents, Care Raiser offers the most comfortable and dignified alternative for the most sensitive hygiene routines such as changing incontinence pads.



# KEY FEATURES

With smart design solutions for access, support and manoeuvrability, *Carendo* makes hygiene routines easier for the carer and resident.

## 1 Care Raiser function



This unique function enables the carer to provide sensitive, high-quality hygiene care that maintains the resident's dignity.

## 2 Comfort and support



The high backrest offers full back and head support – even for residents with diminished upper body stability.

## 3 Multiple manoeuvring handles



Ergonomically designed handles, located at different heights, mean the carer can choose the most comfortable grip when manoeuvring.

## 4 Easy recharge



The integrated battery is light and easy to change. With a spare battery in the charger, *Carendo* is always ready to use.



## Good access



Care Raiser gently lifts the lower part of the resident's body, providing good access for undressing/dressing and changing incontinence pads.

## Toilet integration



The resident can be placed over a standard toilet in *Carendo*, offering easy integration for efficient toileting routines.

## Disinfection



The smooth surfaces of *Carendo* make it easy to disinfect between uses, making it fast and efficient to prepare for the next resident.

## Sara transfer



In combination with the standing and raising aid *Sara 3000™*, assisted transfers and toileting can be carried out without the stress and injury risk associated with manual handling.

## Maxi Move transfer



Smooth integration with the mobile passive lifter *Maxi Move™* means residents can be safely and efficiently transferred for hygiene routines.

### Enhance efficiency

*Carendo* enhances the efficiency of hygiene routines by saving time. Although there is a widespread belief that washing a resident in bed is a quicker method, a study<sup>(3)</sup> has revealed that showering with a height-adjustable chair can actually be up to 45% more time-efficient.

Care Raiser is a key factor in streamlining care processes by offering easier access to the perineal area to support high-quality hygiene routines. Only one carer is required.

### Improve comfort

*Carendo* is designed to make hygiene routines as comfortable as possible for the resident. The resident feels better and more relaxed, because *Carendo* can be reclined at the most comfortable angle for each routine e.g. hairwashing. The resident is comfortably supported at all times by the full-length backrest and head cushion. As well as providing optimum support, the attractive design of *Carendo* helps to put the resident at ease.

### Maximize safety

Every aspect of *Carendo* is designed to maximise resident safety during hygiene routines. The outstanding stability of the chassis gives the resident a sense of security, even in the highest position. Importantly, the resident feels safe when being raised, lowered and reclined – due to the smooth and gentle movement during these adjustments.

(3) Schimmel G, Knibbe NE, The Smart Shower Chair, Final Report of the Zorg voor Beter (Better Care) Smart Shower Chairs project.



The resident is comfortable at all times.



Easier access to feet means better footcare.



Showering and dressing can be managed in an efficient and ergonomically sound way in the shower room by one carer.



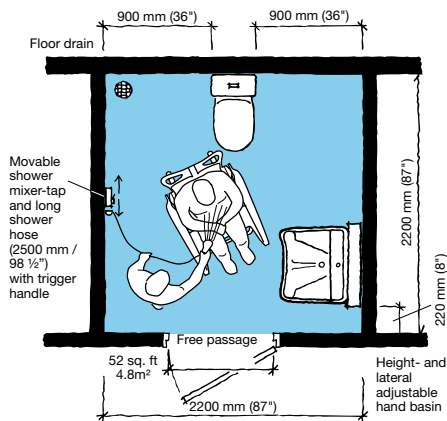
Care Raiser lifts the lower part of the resident's body and provides easy and discreet access for sensitive tasks, allowing care with dignity.



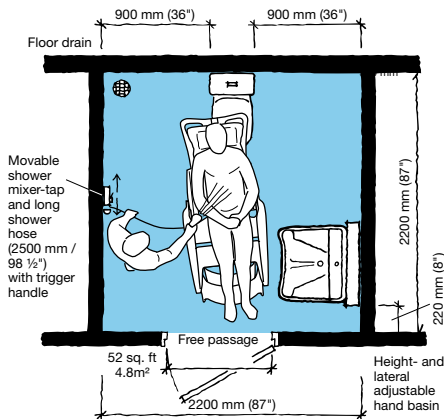
With *MaxiSky 600* the carer can easily perform transfers between the bed and *Carendo*.

# PRODUCT SPECIFICATIONS

## Space requirement



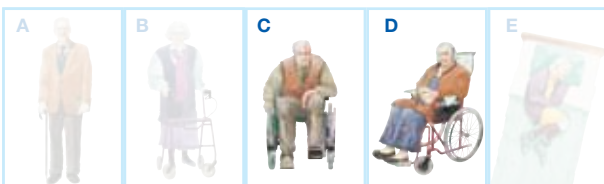
The working area needed for showering a resident in an upright sitting position.



The working area required for showering a resident in a fully reclined position.

## Mobility Gallery

Suitable for Carl and Doris



**C Carl**, who sits in a wheelchair and has little capacity to support himself

**D Doris**, who has no capacity to support herself

Please contact ArjoHuntleigh for further information on the Mobility Gallery™.

# ARJOHUNTLEIGH

## GETINGE GROUP

[www.ArjoHuntleigh.com](http://www.ArjoHuntleigh.com)

**ArjoHuntleigh International Ltd**

310-312, Dallow Road Luton

Bedfordshire LU1 1TD

United Kingdom

Phone: +44 1582 745 800

Fax: +44 1582 745 866

E-mail: [international@arjohuntleigh.com](mailto:international@arjohuntleigh.com)

## Product Information

Lifting capacity	136 kg (300 lbs)
Weight	64 kg (141 lbs)
Chassis, max width	640 mm (25")
Chassis, width between legs	500 mm (19 ¾")
Chassis, max length (incl. brakes)	925 mm (36 ½")
Lifting stroke range (seat)	550 mm (21 ¾")
Seat height, lowest/ highest position	470/950 mm (18 ½ / 37 ½")
Min. height/length, upright position	1230/890 mm (48 ½ / 35")
Max length, reclined position	1520 mm (59 ¾")

## Approvals

TüV

## Accessories



Bedpan



Toilet adapter



Back cushion

Only ArjoHuntleigh designed parts, which are designed specifically for the purpose, should be used on the equipment and products supplied by ArjoHuntleigh. As our policy is one of continuous development we reserve the right to modify designs and specifications without prior notice.

© and ™ are trademarks belonging to the ArjoHuntleigh group of companies.  
© ArjoHuntleigh, 2012



**GETINGE GROUP** is a leading global provider of products and systems that contribute to quality enhancement and cost efficiency within healthcare and life sciences. We operate under the three brands of **ArjoHuntleigh**, **GETINGE** and **MAQUET**. **ArjoHuntleigh** focuses on patient mobility and wound management solutions. **GETINGE** provides solutions for infection control within healthcare and contamination prevention within life sciences. **MAQUET** specializes in solutions, therapies and products for surgical interventions and intensive care.