

STANDING AND RAISING AID

Sara® Flex - details that make a difference

At Arjo, 60 years of experience have taught us that details are everything. They are the difference between comfort and pain, a calm patient or a frightened patient, a caregiver that can work efficiently or a caregiver always trying to catch up. When moving a patient from a sitting to a standing position, details make all the difference.

Designed to make every-day transfer and care tasks easier, Sara® Flex from Arjo equips one caregiver with the ability to position a patient from a seated to a safe, secure and comfortable standing position, in one ergonomic movement.

It's the details that make every transfer a positive experience, whether it be to a wheelchair, toilet, shower chair or for early mobilisation following surgery.



Carl mobility spectrum



Optimised patient support

Promotes comfort and security throughout and at the completion of the sit-to-stand movement¹

Comprehensive patient coverage

Enables one caregiver to perform sit-to-stand tasks for a wide range of patients in the Carl mobility spectrum

Easy to use with enhanced manoeuvrability

Delivers enhanced manoeuvrability and requires no adjustment, ensuring ease of use

Technical specifications

General

Max safe working load	200 kg / 440 lbs
Weighing capacity	200 kg / 440 lbs
Weight	52 kg / 114,5 lbs
Weight with scale	53,6 kg / 118 lbs
Total length	996 mm 39 1/4"
Min lifting height	991 mm 39"
Max lifting height	1518 mm / 59 3/4"
Total height	1162 mm 45 3/4"
Height of chassis	100,5 mm
External width legs closed	660 mm / 26"
External width legs open	1029 mm / 40 1/2"
Battery	24V DC 4Ah
Battery pack	3.8 kg / 8.4 lb
Lifter protection class	IP24
Handcontrol protection class	IPX7

Low friction castors, with two rear brakes

Battery Discharge Indicator (BDI) - displays remaining power and indicates when the battery needs charging

Service meter - displays the total motor usage time

Emergency stop and system failure override

Option

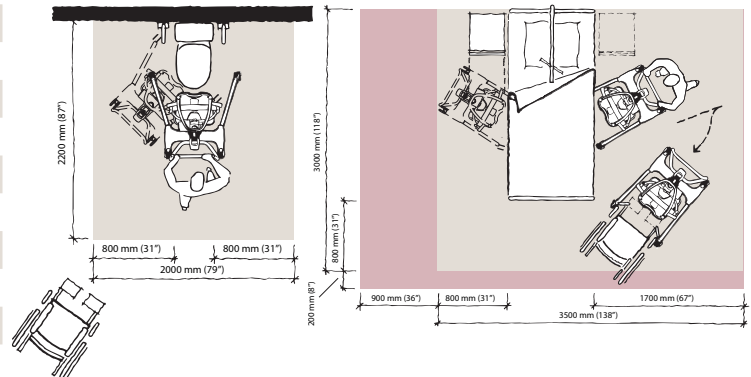
Integrated Class III weigh scale

Approvals

EN/IEC 60601-1 (TÜV SÜD)

EN ISO 10535: 2006 (TÜV SÜD)

Space Requirements



Grey area shows the minimum working area required for the staff to be able to use the mechanical aids in an ergonomic way from one side.

Pink area shows required extension of working area to facilitate activities from either side to provide adequate access for the resident, mechanical aid and assisting carer.

Allowed Sling Combinations

Standing Sling	• TSS.500 (S)
	• TSS.501 (M)
	• TSS.502 (L)
	• TSS.503 (XL)
	• TSS.504 (XXL)
Standing Sling (Flites)	• MFA3000 (Patient Specific Disposable, one size)
Transfer Sling	• TSS.511 (Only to be used with Central Hook)

References:

1. Fray M et al. (2018) An evaluation of sit to stand devices for use in rehabilitation (whitepaper)

Arjo UK - Head Office · Houghton Hall Business Park · Houghton Regis · LU5 5XF
Phone: +44 (0) 8457 342000 · Private customer: +44 (0) 3457 342000 · Fax: +44 (0) 1582 745745 · Email: sales.admin@arjo.com

Arjo UK Service and Technical Centre · St Catherine Street · Gloucester · GL1 2SL
Phone: +44 (0) 8456 114114 · Private customer: +44 (0) 3456 114114 · Service fax: +44 (0) 1452 525207 · Email: ukservice@arjo.com

Arjo UK - Belfast Office · Units 16-18 · 19 Heron Road · Belfast, BT3 9LE · Northern Ireland
Phone: +44 (0) 28 9050 2000 · Fax: +44 (0) 28 9050 2001 · Email: Belfast@arjo.com

Arjo (Ireland) Ltd · EA House · Damastown Industrial Park · Mulhuddart · Dublin 15 · Republic of Ireland
Phone: +353 (0)1 809 8960 · Fax: +353 (0)1 809 8971 · Email: Dublin@arjo.com

www.arjo.co.uk

01.KK.30.2.GB.1.ARJO - Sara Flex. March 2018 - Only Arjo designed parts, which are designed specifically for the purpose, should be used on the equipment and products supplied by Arjo. As our policy is one of continuous development we reserve the right to modify designs and specifications without prior notice.

® and ™ are trademarks belonging to the Arjo group of companies.

arjo